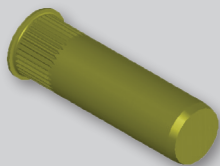


CAK SMALL FLANGE KNURLED BODY THIN WALL SERIES

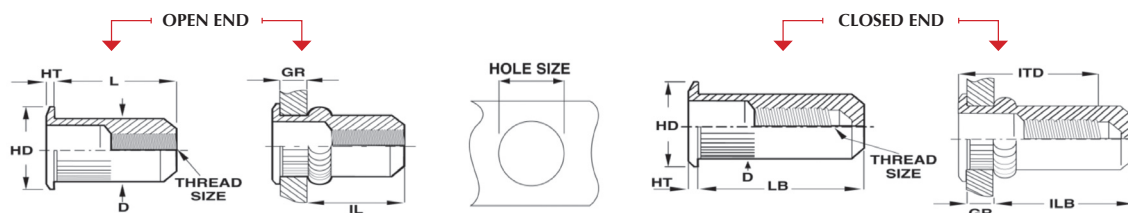
CAK SERIES



- The CAK series has a small flange for a near flush installation.
- Knurled body provides a higher resistance to spin out when installed in soft materials.
- Inch body
- Inch and metric threads



CLOSED END



UNIFIED THREAD (UNIT - INCHES)

Part Number (Steel)	Thread Size	Grip Range		L ± .015	HD ±.010 ±.015*	HT ± .002	D Max.	IL Max.	LB ± .015	ILB Max.	ITD Ref.	Hole Size +.006/- .000
		Min.	Max.									
CAK2-0632-080	6-32 UNC	.020	.080	.420	.310	.019	.265	.305	.740	.640	.610	.266
CAK2-0632-130	6-32 UNC	.080	.130	.470	.310	.019	.265	.305	.740	.580	.670	.266
CAK2-0832-080	8-32 UNC	.020	.080	.420	.310	.019	.265	.305	.740	.640	.610	.266
CAK2-0832-130	8-32 UNC	.080	.130	.470	.310	.019	.265	.305	.740	.580	.670	.266
CAK2-1024-130	10-24 UNC	.020	.130	.475	.340	.019	.296	.315	.990	.845	.730	.297
CAK2-1024-225	10-24 UNC	.130	.225	.585	.340	.019	.296	.315	.990	.735	.840	.297
CAK2-1032-130	10-32 UNF	.020	.130	.475	.340	.019	.296	.315	.990	.845	.730	.297
CAK2-1032-225	10-32 UNF	.130	.225	.585	.340	.019	.296	.315	.990	.735	.840	.297
CAK2-2520-165	1/4-20 UNC	.027	.165	.580	.455	.022	.390	.380	1.190	1.005	.895	.391
CAK2-2520-260	1/4-20 UNC	.165	.260	.680	.455	.022	.390	.380	1.190	.905	1.035	.391
CAK2-2528-165	1/4-28 UNF	.027	.165	.580	.455	.022	.390	.380	1.190	1.005	.895	.391
CAK2-2528-260	1/4-28 UNF	.165	.260	.680	.455	.022	.390	.380	1.190	.905	1.035	.391
CAK2-3118-150	5/16-18 UNC	.027	.150	.690	.595*	.022	.530	.470	1.390	1.175	.995	.531
CAK2-3118-312	5/16-18 UNC	.150	.312	.805	.595*	.022	.530	.425	1.390	1.025	1.120	.531
CAK2-3124-150	5/16-24 UNF	.027	.150	.690	.595*	.022	.530	.470	1.390	1.175	.995	.531
CAK2-3124-312	5/16-24 UNF	.150	.312	.805	.595*	.022	.530	.425	1.390	1.025	1.120	.531
CAK2-3716-150	3/8-16 UNC	.027	.150	.690	.595*	.022	.530	.470	1.390	1.175	.995	.531
CAK2-3716-312	3/8-16 UNC	.150	.312	.805	.595*	.022	.530	.425	1.390	1.025	1.120	.531
CAK2-3724-150	3/8-24 UNF	.027	.150	.690	.595*	.022	.530	.470	1.390	1.175	.995	.531
CAK2-3724-312	3/8-24 UNF	.150	.312	.805	.595*	.022	.530	.425	1.390	1.025	1.120	.531

METRIC THREAD (UNIT - MILLIMETERS)

Part Number (Steel)	Thread Size	Grip Range		L ± .38	HD ±.25 ±.38*	HT ± .05	D Max.	IL Max.	LB ± .38	ILB Max.	ITD Ref.	Hole Size +.15/- .000
		Min.	Max.									
CAK2-470-2.0	M4x0.7 ISO	0.50	2.00	10.67	7.87	0.48	6.73	7.75	18.80	16.26	15.49	6.75
CAK2-470-3.3	M4x0.7 ISO	2.00	3.30	11.94	7.87	0.48	6.73	7.75	18.80	14.73	17.02	6.75
CAK2-580-3.3	M5x0.8 ISO	0.50	3.30	12.07	8.64	0.48	7.52	8.00	25.15	21.46	18.54	7.60
CAK2-580-5.7	M5x0.8 ISO	3.30	5.70	14.86	8.64	0.48	7.52	8.00	25.15	18.67	21.34	7.60
CAK2-610-4.2	M6x1.0 ISO	0.70	4.20	14.73	11.56	0.55	9.91	9.65	30.23	25.53	22.73	10.00
CAK2-610-6.6	M6x1.0 ISO	4.20	6.60	17.27	11.56	0.55	9.91	9.65	30.23	22.99	26.29	10.00
CAK2-8125-3.8	M8x1.25 ISO	0.70	3.80	17.53	15.11*	0.55	13.46	11.94	35.31	29.85	25.27	13.50
CAK2-8125-7.9	M8x1.25 ISO	3.80	7.90	20.45	15.11*	0.55	13.46	10.80	35.31	26.04	28.45	13.50
CAK2-1015-3.8	M10x1.5 ISO	0.70	3.80	17.53	15.11*	0.55	13.46	11.94	35.31	29.85	25.27	13.50
CAK2-1015-7.9	M10x1.5 ISO	3.80	7.90	20.45	15.11*	0.55	13.46	10.80	35.31	26.04	28.45	13.50

♦ Non-Standard Part: Minimum order quantity required after depletion of stock. Please contact Sherex for current availability.

PART NUMBERING SYSTEM

CAK Specifications

Material:

Steel 1008/1010
Stainless Steel 302*
Aluminum 5056

RoHS Compliant Finishes:

Zinc Plated-Yellow Trivalent Chromate
per Sherex SFS-01-001, SC2
Zinc Plated-Clear Trivalent Chromate
per Sherex SFS-01-001

Part Number

Example: CAK2-2520-165

CAK	2	2520	165	()
Product Style	Material	Thread Size	Grip Range	Empty-Open End
Small Flange	1-Stainless Steel			B-Closed End
Knurled Body	2-Steel			T-Clear Trivalent
Thin Wall Series	3-Aluminum			

Special finish or material available upon request

*Contact Sherex for exact product dimensions in Stainless Steel.

Grip range can be affected by parent material and hole size. Sherex recommends trial installations to determine the proper grip range for the application.

Contact Sherex for details.

CAK style rivet nuts are available in closed end designs. Other specials available upon request.

Contact Sherex for test data.

Mating material holes must be smaller than flange diameter.

INSTALLATION TOOLING

CAK Series can be installed with our Hand Tools, Pneumatic Tools, and Hydro-Pneumatic Tools.
For additional tooling information see pages 39-44.

Sherex rivet nuts are compatible with the following hardware:

GRADE 2, GRADE 5, CLASS 8.8 and CLASS 9.8

Please contact Sherex when using other grade fasteners.

Sherex Fastening Solutions • 866-474-3739 • www.sherex.com • info@sherex.com